

GATEWAY EAST & GATEWAY WEST | GAMING, RODEO ARENAS & CHAMPIONSHIP STADIUM DEVELOPMENT

Gaming & Destination Entertainment; Integrated Gaming, Rodeo, Professional Rodeo Associations, Arenas & Stadium Development – Gateway East & Gateway West

GAMING & DESTINATION ENTERTAINMENT

The gaming opportunity at these developments is positioned to become one of the premier entertainment attractions in the American West. Designed around pari-mutuel wagering and global simulcasting, the gaming environments are envisioned as immersive destinations that combine excitement, luxury, and authentic western identity. Rather than standalone gaming facilities or off-track betting facilities (OTB's), the projects offer integrated entertainment experiences where guests can enjoy gaming alongside hospitality, nightlife, and live events, creating a compelling year round destination for regional visitors and national tourism alike.

WESTERN RODEO, ARENAS & CHAMPIONSHIP STADIUM DEVELOPMENT

The rodeo, arena, and stadium developments present a rare opportunity to create iconic venues dedicated to western sport and culture. The vision includes purpose-built arenas capable of hosting professional rodeo events, equestrian competitions, national championships, large-scale festivals, and premium spectator experiences. Designed as landmark attractions, these venues celebrate heritage while attracting national audiences, sponsorships, and year-round event programming. Market studies have identified these concepts as viable opportunities with strong long-term destination potential.

Arena concepts include 5,000 to 10,000 seat capacity, VIP hospitality sections, and adjacent gaming and entertainment amenities. For reference, investors are encouraged to visit South Point Hotel Casino & Spa in Las Vegas, NV as an example of the type of integrated rodeo and entertainment environment envisioned for these developments.

GATEWAY EAST & GATEWAY WEST | GAMING, RODEO ARENAS & CHAMPIONSHIP STADIUM DEVELOPMENT

PROFESSIONAL RODEO ASSOCIATIONS

The rodeos are sanctioned by professional rodeo associations such as the Professional Rodeo Cowboys Association (PRCA) and the Professional Bull Riders (PBR). In addition, the Wyoming-based Frontier Professional Rodeo Association (FPRA) and World Pro Rodeo League (WPRL) will be licensed in Wyoming, with benefits to the state expected to be far-reaching. These events celebrate ranching heritage while delivering high-stakes athletic competition, with top-tier events awarding significant purses.

The two new professional rodeo associations (FPRA and WPRL) will be aligned with the East and West resort developments, one regional and one national/global in scope. By offering some of the highest rodeo purses in the industry, the venues are positioned to attract year-round and membership participation from elite professional cowboys, riders, and a broad range of competitors from across the country and internationally. The developments will host their own signature rodeo finals while also welcoming participation from established professional rodeo associations, creating a layered competitive environment that strengthens overall event programming, increases athlete participation, and elevates the profile of the venues on a national and global stage.

The arena study floor plans illustrate the full programmatic layout including practice arenas, pavilion arenas, exhibition areas, conference rooms, service areas, and circulation zones.

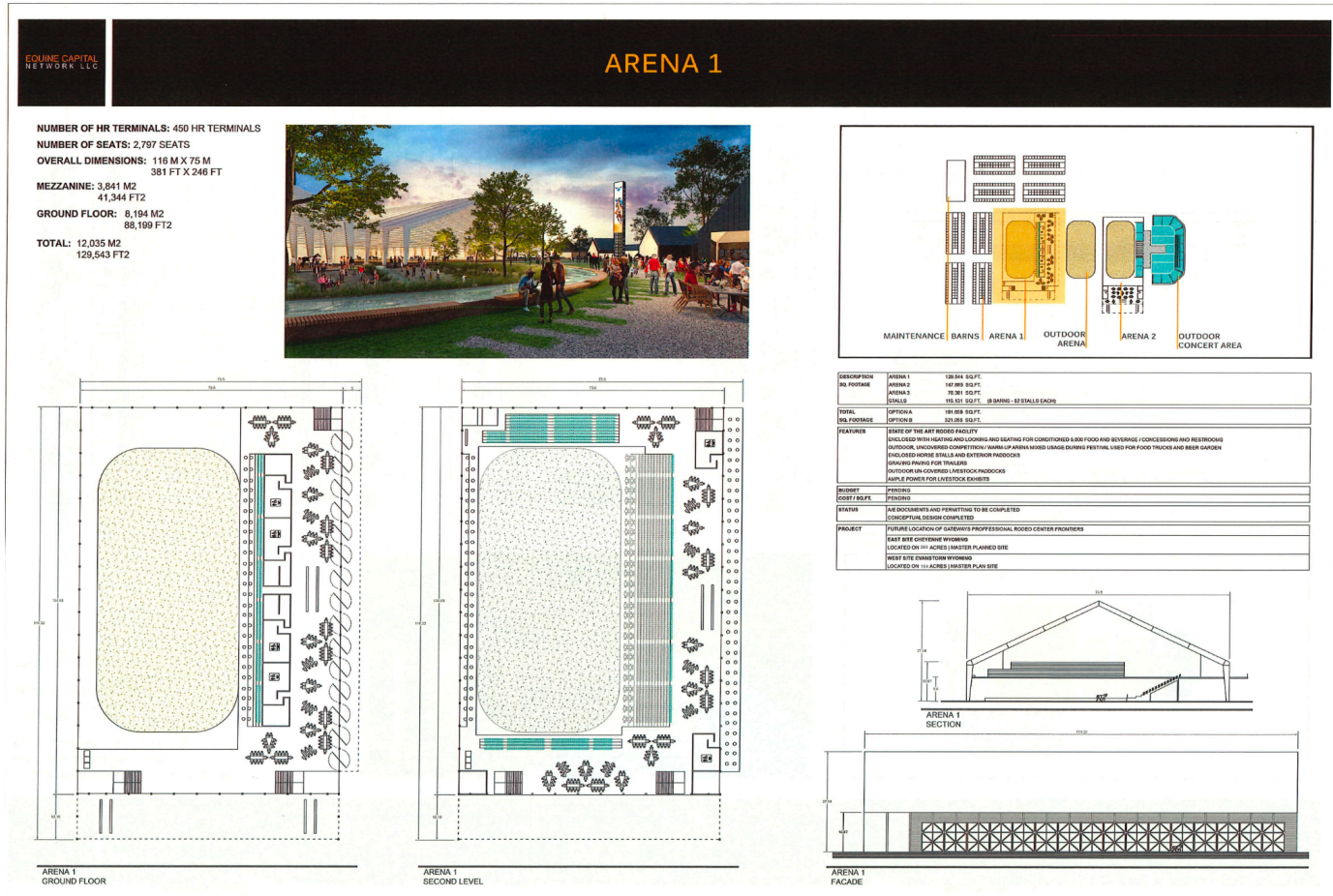


GATEWAY EAST & GATEWAY WEST | GAMING, RODEO ARENAS & CHAMPIONSHIP STADIUM DEVELOPMENT

Schematic Arena 1

Technical Drawings – Ground Floor, Second Level, Section & Facade

Arena 1 is a state-of-the-art indoor rodeo facility with 2,797 seats, 450 HR terminals, and overall dimensions of 116M x 75M (381 ft x 246 ft). Total area: 12,035 M² (129,543 ft²).



Arena 1 – Ground floor, second level, section, and facade drawings

**GATEWAY EAST & GATEWAY WEST | GAMING, RODEO ARENAS & CHAMPIONSHIP STADIUM
DEVELOPMENT**



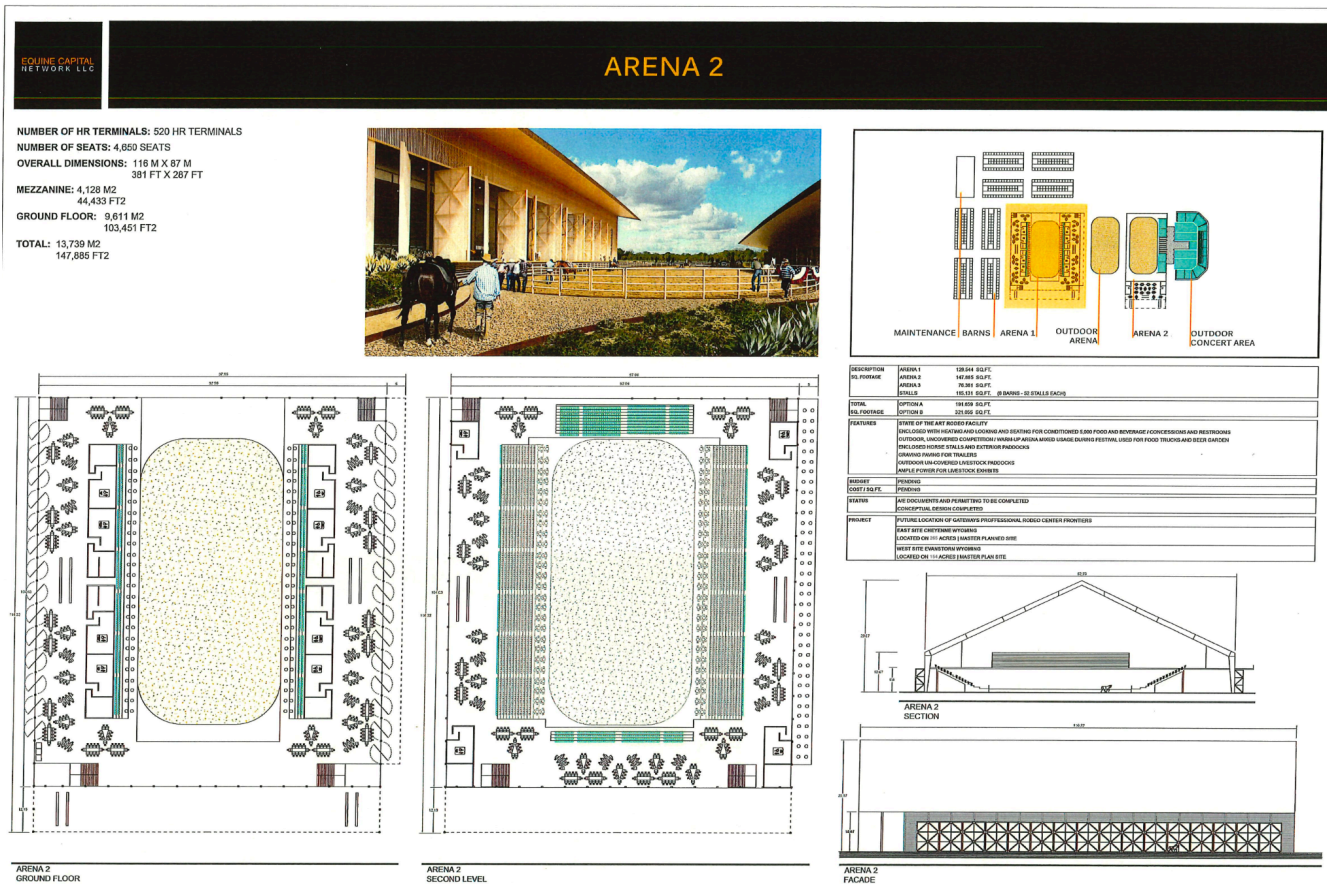
Arena 1 – conceptual exterior rendering

GATEWAY EAST & GATEWAY WEST | GAMING, RODEO ARENAS & CHAMPIONSHIP STADIUM DEVELOPMENT

Schematic Outdoor Arena 2

Technical Drawings – Ground Floor, Second Level, Section & Facade

Arena 2 is an outdoor arena with 4,650 seats, 820 HR terminals, and overall dimensions of 118M x 87M (381 ft x 267 ft). Total area: 13,739 M² (147,888 ft²).



**GATEWAY EAST & GATEWAY WEST | GAMING, RODEO ARENAS & CHAMPIONSHIP STADIUM
DEVELOPMENT**

Arena 2 – Ground floor, second level, section, and facade drawings



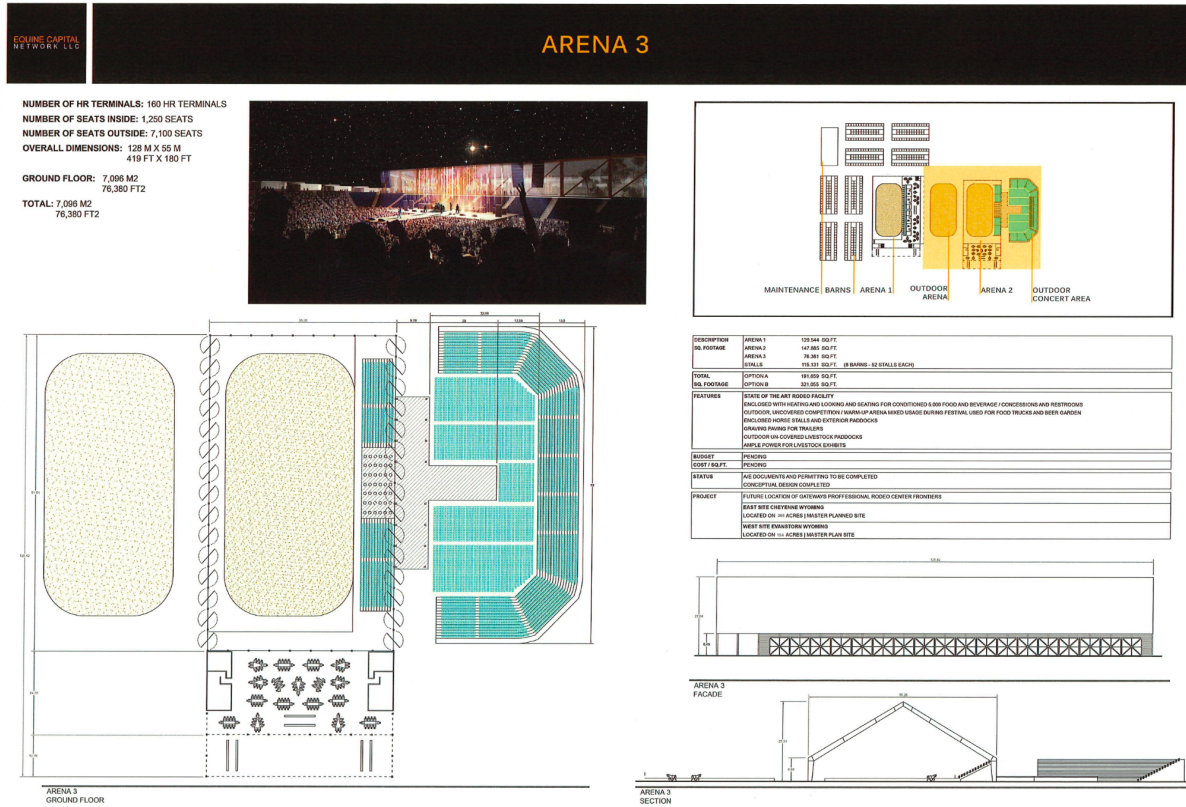
Arena 2 – conceptual exterior rendering

GATEWAY EAST & GATEWAY WEST | GAMING, RODEO ARENAS & CHAMPIONSHIP STADIUM DEVELOPMENT

Schematic Arena 3

Technical Drawings – Ground Floor, Section & Facade

Arena 3 is a large-scale outdoor concert arena with 1,250 seats inside and 7,100 seats outside, 160 HR terminals, and overall dimensions of 128M x 55M (419 ft x 180 ft). Total area: 7,098 M² (76,380 ft²).



**GATEWAY EAST & GATEWAY WEST | GAMING, RODEO ARENAS & CHAMPIONSHIP STADIUM
DEVELOPMENT**

Arena 3 – Ground floor, section, and facade drawings

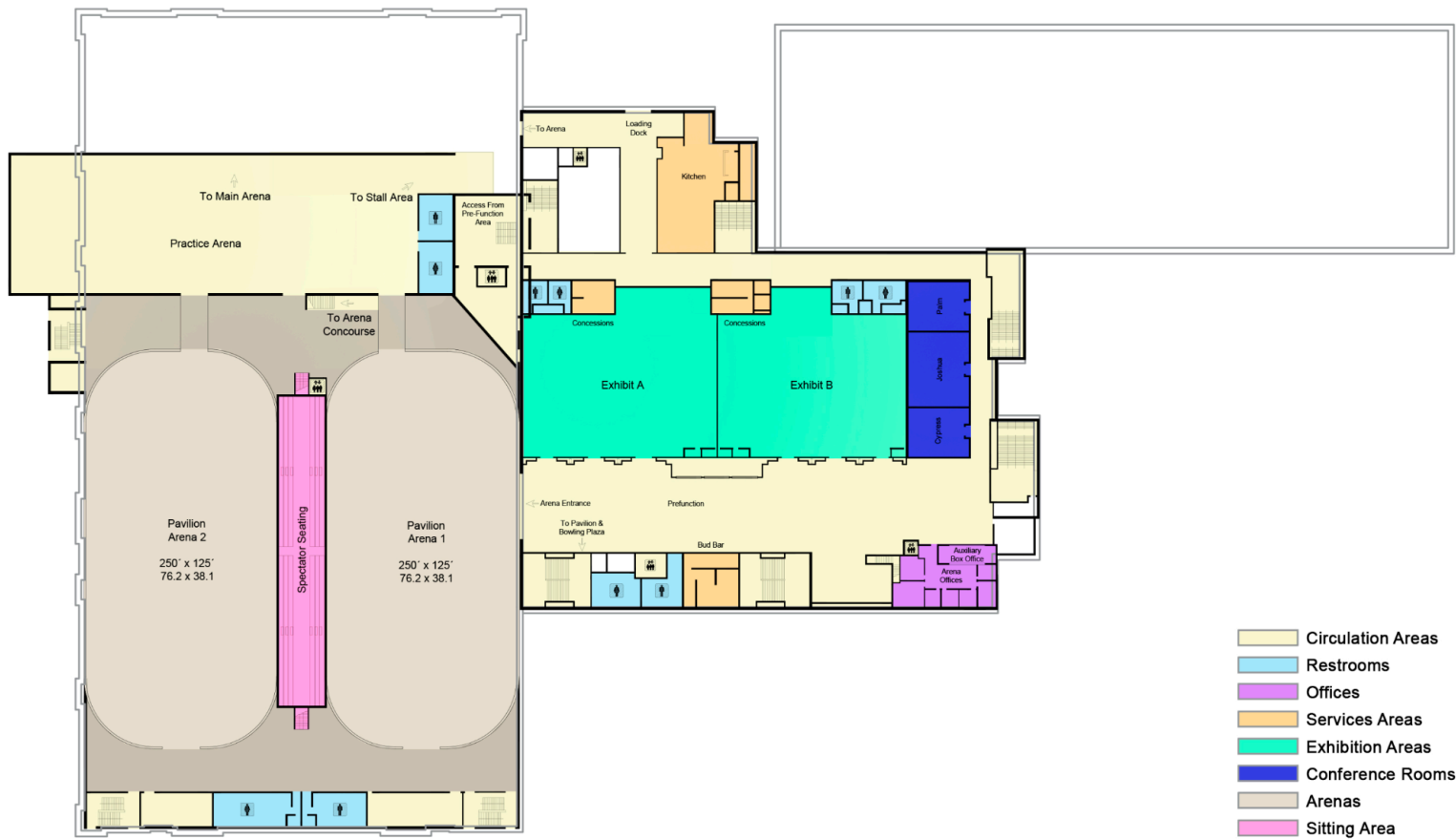


Arena 3 – conceptual exterior rendering

GATEWAY EAST & GATEWAY WEST | GAMING, RODEO ARENAS & CHAMPIONSHIP STADIUM DEVELOPMENT

Arena Study Floorplans

The arena study floor plans illustrate the full programmatic layout including practice arenas, pavilion arenas, exhibition areas, conference rooms, service areas, and circulation zones.



GATEWAY EAST & GATEWAY WEST | GAMING, RODEO ARENAS & CHAMPIONSHIP STADIUM DEVELOPMENT

The concourse level floor plan illustrates the arena bowl, stalls, VIP areas, saloon, horse-related facilities, boot barn meeting rooms, and full equestrian support infrastructure.

