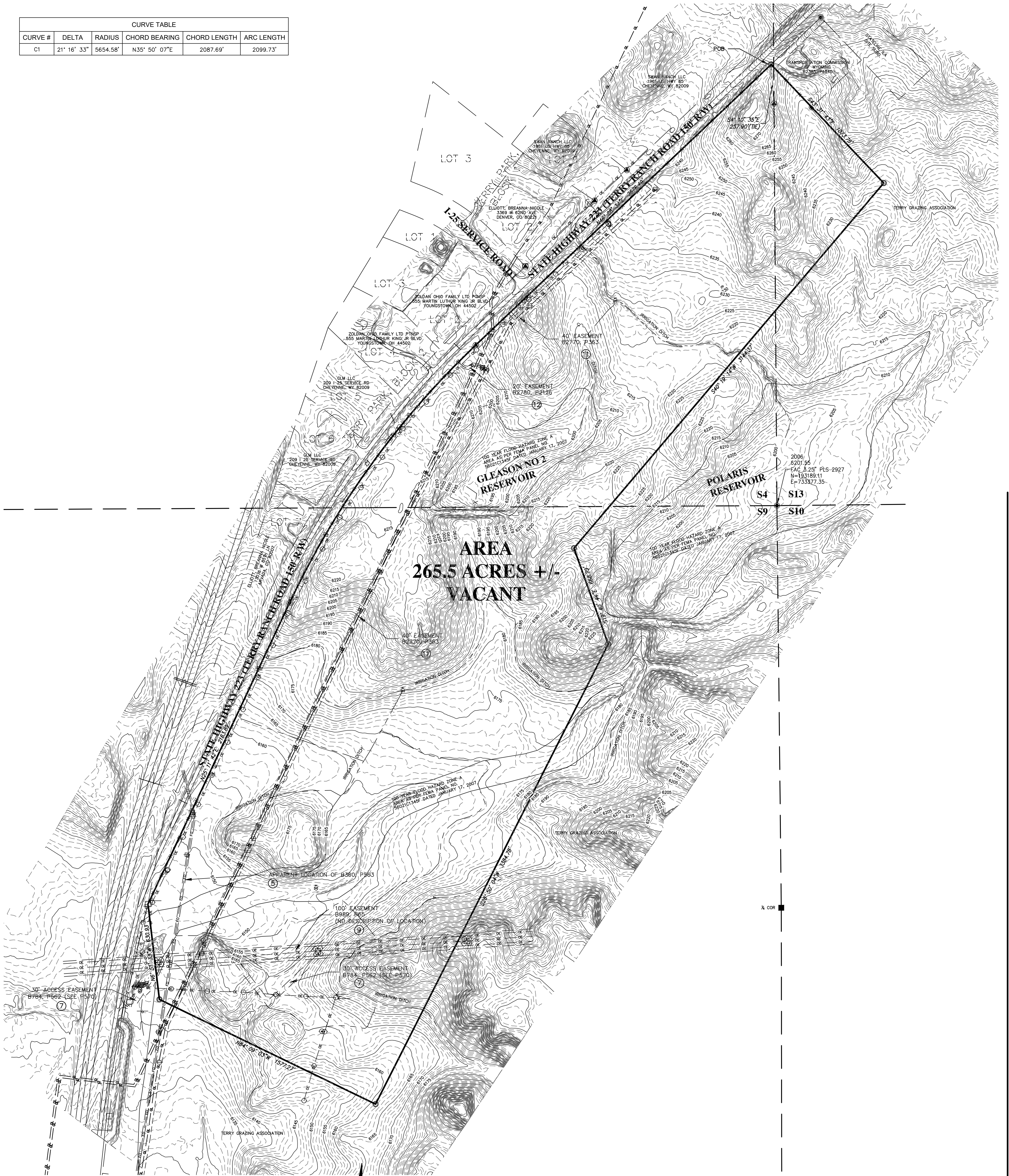
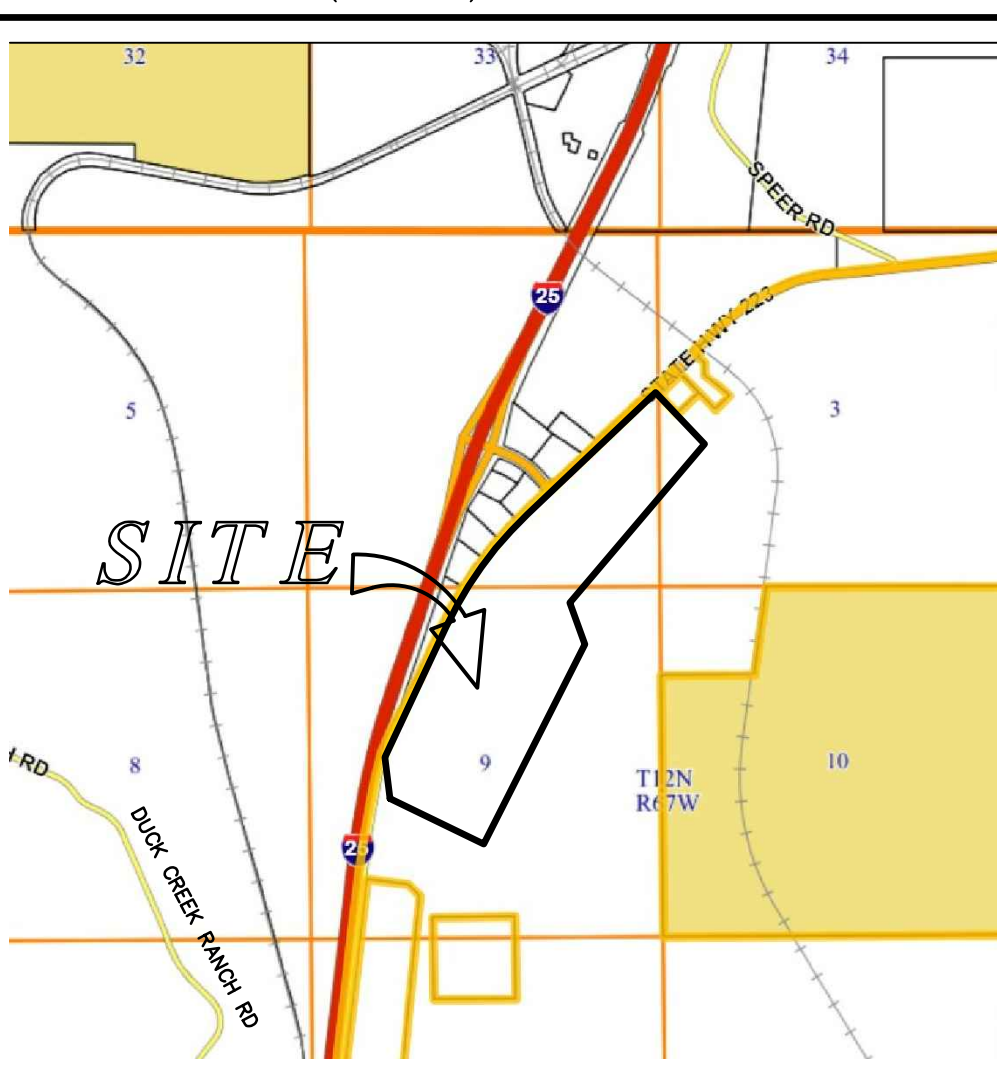


CURVE TABLE					
CURVE #	DELTA	RADIUS	CHORD BEARING	CHORD LENGTH	ARC LENGTH
C1	21° 16' 33"	5654.58'	N35° 50' 07"E	2087.69'	2099.73'

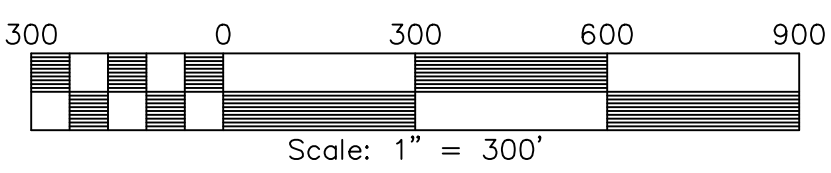
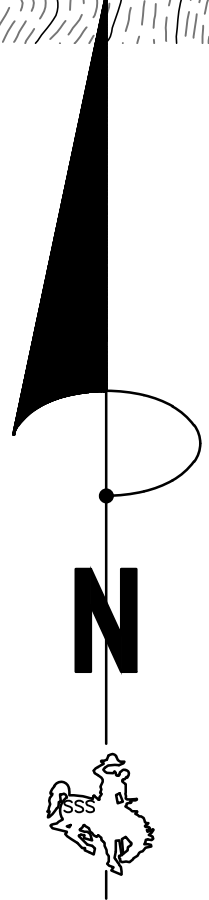


VICINITY MAP  
(NOT TO SCALE)



**LEGEND**

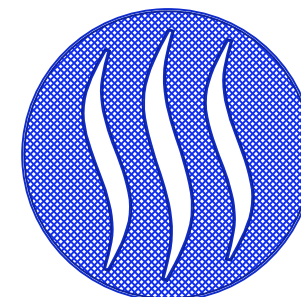
- SET 3/8" x 24" LONG REBAR WITH 1/2" ALUMINUM CAP STAMPED "SSS P.L.S. 5910"
- FOUND 1/2" ALUMINUM CAP STAMPED "SSS P.L.S. 2500"
- FOUND 1/2" ALUMINUM CAP STAMPED "P.L.S. 2927"
- FOUND W.D.O.T. R/W MONUMENT
- FOUND GLO STONE
- EXISTING LIGHT POLE
- EXISTING UTILITY POLE
- EXISTING GUY WIRE
- EXISTING GAS VALVE
- EXISTING GAS METER
- EXISTING SINGLE POST SIGN
- EXISTING OVERHEAD ELECTRIC LINES
- x— EXISTING FENCE LINE
- g— EXISTING GAS LINE
- fo— EXISTING BURIED FIBER OPTIC LINE



# ALTA\NSPS LAND TITLE SURVEY FOR GATEWAY EAST

A TRACT OF LAND SITUATE IN A PORTIONS OF SECTIONS 3, 4 AND 9, TOWNSHIP 12 NORTH, RANGE 67 WEST, 6th P.M., LARAMIE COUNTY, WYOMING,

SHEET 1 OF 2 PREPARED June, 2023



**STEIL SURVEYING SERVICES, LLC**  
**PROFESSIONAL LAND SURVEYORS**  
**PLANNING & DEVELOPMENT SPECIALISTS**  
 1102 WEST 19th ST. CHEYENNE, WY. 82001 • (307) 634-7273  
 756 GILCHRIST ST. WHEATLAND, WY. 82201 • (307) 322-9789  
[www.SteilSurvey.com](http://www.SteilSurvey.com) • [info@SteilSurvey.com](mailto:info@SteilSurvey.com)

REVISED: 6/27/2023  
23108 ALTA.DWG